

The Influence of Generative AI Models in the Workplace

Abdullah Zarie¹; Talal Aljohani²; Yasser Bahwiney³

Publication Date: 2025/08/25

Abstract: This paper explores the impact of generative artificial intelligence (AI) models in modern workplace. Using tools such as ChatGPT, Midjourney, Gemini and GitHub Copilot, generative AI is changing our way for approaching creativity, productivity, and decision-making. This essay analyzes the benefits and challenges of adopting generative AI, focusing on workplace efficiency, shifting job requirements, ethical implications, and the long-term relationship between humans and AI technologies. The findings suggest that generative AI is not a replacement for human intelligence but a complementary tool that redefines roles and enhances innovation when implemented thoughtfully.

How to Cite: Abdullah Zarie; Talal Aljohani; Yasser Bahwiney (2025) The Influence of Generative AI Models in the Workplace. *International Journal of Innovative Science and Research Technology*, 10(8), 1027-1029. <https://doi.org/10.38124/ijisrt/25aug468>

I. INTRODUCTION

Nowadays, the rapid development of generative artificial intelligence is revolutionizing the workplace. Unlike the traditional automation that replicates existing tasks, generative AI creates new content—text, images, software code, and more—based on data patterns. These tools enable employees and workforces to work faster, think more creatively, and engage in complex problem-solving. With platforms like ChatGPT transforming communication, and visual design tools like DALL·E accelerating prototyping, AI is no longer a future concept—it is an active contributor in daily operations. This essay will discuss how generative AI is shaping the modern

workplace, with attention to productivity, skill requirements, ethics, and human-AI collaboration.

➤ Enhanced Efficiency and Workflow:

Generative AI always reduces time spent on repetitive and cognitive-intensive tasks. From automating report generation to drafting emails, as well as summarizing long documents, AI can complete activities in seconds that might take humans hours or days to finish with Improved quality and accuracy. This efficiency empowers professionals' forces to focus on high-value strategic work. Tools like GitHub Copilot help developers write code with fewer errors, while AI writing assistants produce polished content on demand. As a result, organizations are seeing increased output and reduced operational holdups.

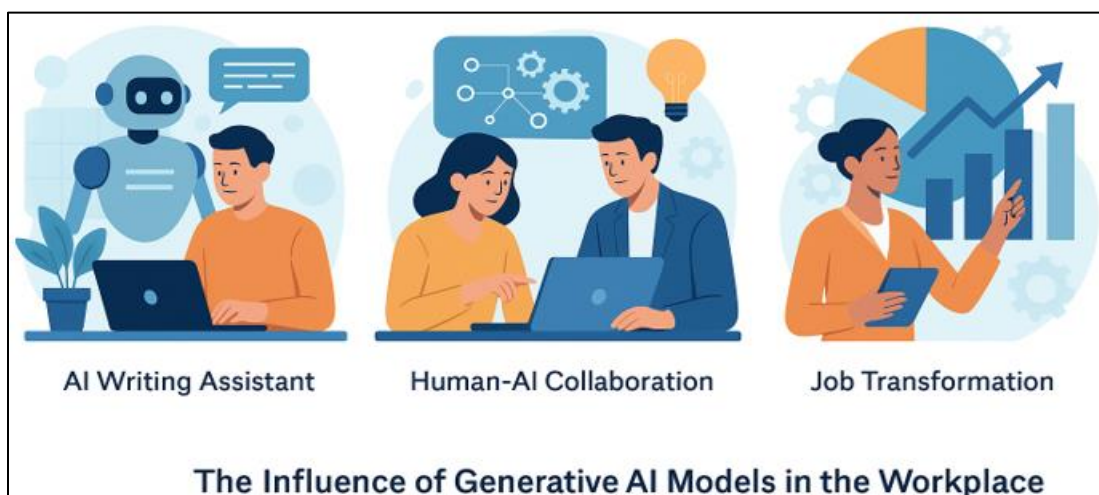


Fig 1: Depiction of Generative AI Integration Across Different Workplace Settings.

➤ *Evolution of Roles and Skills*

Since AI takes over many routine tasks, the nature of human roles is shifting. Certain jobs are not necessarily disappearing, but they are being reshaped. Specialists are now required to develop skills in AI prompting, oversight, and ethical use. For example, content creators now serve more as curators and editors than sole authors. Similarly, customer support agents may rely on AI-generated responses but must still apply human judgment to sensitive interactions.

In response, companies and organizations are revising their training programs to include digital fluency, data interpretation, and AI collaboration strategies. The workforce of tomorrow will need to blend technical understanding with soft skills like empathy and adaptability to be ready for the new roles.

➤ *Creative Expansion*

Generative AI has emerged as a powerful catalyst for innovation, revolutionizing the way designers, writers, and engineers approach their creative processes. By leveraging AI's capabilities, these professionals can now explore ideas at an unprecedented pace, unshackled by traditional resource constraints. For instance, an illustrator might utilize AI-generated visuals as a starting point, allowing them to rapidly experiment with different concepts and refine their work. Similarly, a software engineer can employ AI-generated code snippets to prototype new features, streamlining the development process and fostering a culture of innovation.

The impact of generative AI on the creative process is multifaceted. Not only does it accelerate the speed at which ideas are generated and refined, but it also democratizes access to creative opportunities. Individuals without formal training in design or writing can now tap into the potential of AI, unlocking new avenues for self-expression and innovation. As a result, the boundaries between professionals and non-professionals are becoming increasingly blurred, giving rise to a new era of collaborative creativity.

Moreover, generative AI is enabling a new level of iteration and experimentation, allowing creatives to push the boundaries of what is possible. By automating routine tasks and providing a steady stream of new ideas, AI is freeing up creatives to focus on high-level thinking and strategy. This, in turn, is leading to the development of novel solutions, products, and services that might not have been possible without the aid of AI.

Ultimately, the integration of generative AI into the creative process is poised to transform industries and revolutionize the way we approach innovation. As AI continues to evolve and improve, we can expect to see even more exciting applications of this technology, from art and design to engineering and beyond.

➤ *Ethical Concerns and Governance*

Despite its advantages, generative AI introduces risks related to bias, misinformation, intellectual property, and job displacement. AI systems are only as neutral as the data they are trained on. Therefore, whatever inputs inserted to it can lead to discriminatory outputs, particularly in hiring, finance, or legal decisions. Additionally, questions arise around authorship—should AI-created content be credited to a machine, the user, or both?

Organizations and companies must proactively establish guidelines and guardrails for AI usage. These include policies on transparency, human oversight, content validation, and data privacy. Regulators are also beginning to intervene, signaling that ethical AI adoption will require both internal governance and external compliance. Moreover, when using AI tools in our daily lives, especially for writing or data analysis it is important to acknowledge their contribution. Ethically, users should disclose that the content or insights were supported or generated with the help of AI systems. This transparency helps preserve intellectual property rights, maintains academic and professional integrity, and respects the boundaries between human input and machine assistance—even when AI is used only as a support tool.

➤ *Collaboration, Not Competition*

The future of work is not about humans versus AI, but rather about how the two can work together in achieving the ultimate goal. In successful implementations, AI amplifies human capacity by handling routine or large-scale data tasks while people provide judgment, empathy, and ethical reasoning. For example, an HR professional might use AI to draft performance evaluations but rely on personal insight to finalize decisions.

By viewing AI as a partner rather than a replacement, organizations can build workplaces where technology enhances human potential and creativity, instead of threatening it. This partnership can lead to a numerous benefit, including:

- **Enhanced decision-making:** By combining AI-driven insights with human judgment, organizations can make more informed, data-driven decisions that take into account both quantitative and qualitative factors.
- **Increased productivity:** AI can automate routine tasks, freeing humans to focus on high-value tasks that require creativity, problem-solving, and innovation.
- **Improved employee experience:** By leveraging AI to handle ordinary tasks, organizations can create a more engaging and fulfilling work environment, where employees can focus on tasks that bring them joy and a sense of accomplishment.
- **Better customer experience:** AI can help organizations provide more personalized, empathetic, and responsive customer service, while humans can add a touch of warmth, understanding, and emotional intelligence to interactions.

II. CONCLUSION

Generative AI has already made a significant imprint on the workplace, and its influence will only expand more and more. While the technology holds immense potential to improve productivity and foster creativity, it also requires careful consideration and management with maximum benefit and minimum risks. As businesses and workers adapt, success will depend on embracing AI's strengths while preserving distinctly human values. With thoughtful integration, the workplace of the future can become more efficient, inclusive, and innovative. Ultimately, the future of work will be shaped by our ability to harness the power of generative AI while remaining True to our humanity. By doing so, we can unlock new levels of creativity, collaboration, and growth, and create a brighter, more sustainable future for all.

REFERENCES

- [1]. Brynjolfsson, E., Li, D., & Raymond, L. (2023). Generative AI at Work. Stanford Digital Economy Lab. <https://digitaleconomy.stanford.edu/publications/generative-ai-at-work/>
- [2]. McKinsey & Company. (2023). The Economic Potential of Generative AI. <https://www.mckinsey.com/mgi/our-research/the-economic-potential-of-generative-ai>
- [3]. World Economic Forum. (2023). Future of Jobs Report 2023. <https://www.weforum.org/publications/the-future-of-jobs-report-2023/>
- [4]. Harvard Business Review. (2023). Generative AI Will Enhance — Not Replace — Your Job. <https://hbr.org/2023/06/generative-ai-will-enhance-not-replace-your-job>